

Customer :

customer

Customer part :

customer part

Comment :

Comment

S1=2.01

S2=3.11

Tmax=466

Tp S2=505.0

PI=0.39

HI=120

Sample =1670.10

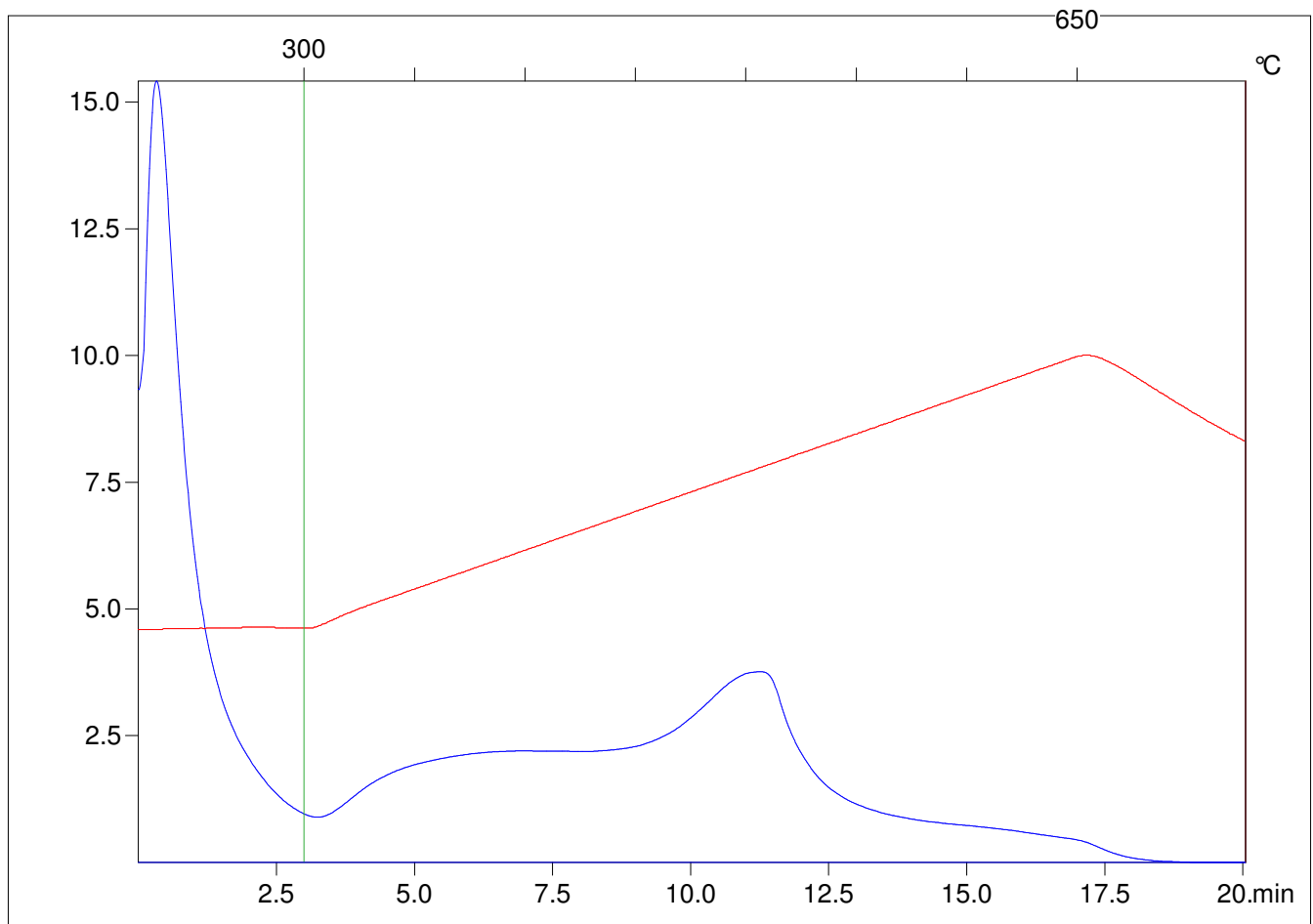
Method =Bulk Rock

Cycle=Basic

KFID(10*9)=1444

Qty =70.3

TOC=2.6



C:\VINC\PK1_1792\PK012.R00 : FID pyrolysis graphic

State

Pyro Status

Oxi Status